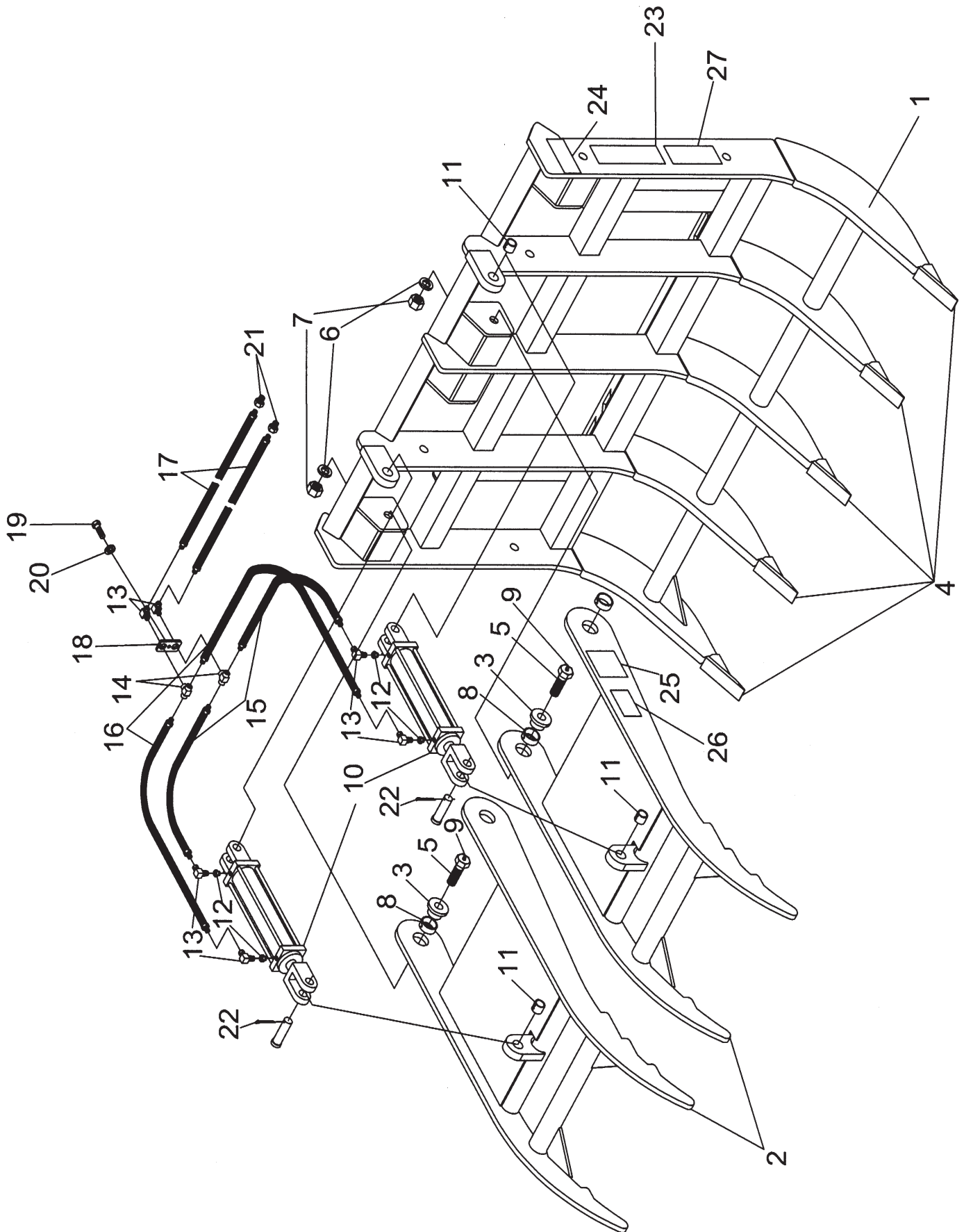


# SKID STEER GRAPPLE PARTS DRAWING



## SKID STEER GRAPPLE PARTS LIST

Ref. No.	Part No.	Description	No. Req'd.
1	811436	Main Frame Weldment (SSGR-262)	1
	811441	Main Frame Weldment (SSGR-277)	1
2	811390	Grapple Clamp Weldment	2
3	811125	Trunnion, Clamp Arm	4
4	811133	Point, Replaceable Grapple (Weld-On)	Var.
5	811389	Bolt 1"-8NC x 3" Hex Head Gr.5	4
6	2502009	Washer 1" Springlock	4
7	2500001	Nut 1"-8NC Full Hex	4
8	2505036	Bushing 2.00 x 1.75 x 0.75 (Connex)	4
9	2504049	Zerk, Drive 5/16	4
10	2504023	Hydraulic Cylinder 2.00 x 10	2
11	2505035	Bushing 1.25 x 1 x 1 (Connex)	4
12	2505517	Reducer Bushing 3/8" to 1/4"	4
13	2505530	90° Swivel Elbow 1/4"-18NPT	6
14	2505539	1/4" Female Tee	2
15	2505514	Hydraulic Hose 1/4" ID x 24" (SSGR-262)	2
	2505506	Hydraulic Hose 1/4" ID x 30" (SSGR-277)	2
16	2505505	Hydraulic Hose 1/4" ID x 36" (SSGR-262)	2
	2505631	Hydraulic Hose 1/4" ID x 42" (SSGR-277)	2
17	2505537	Hydraulic Hose 1/4" ID x 96"	2
18	2504227	Plate, Tee Hold-Down	1
19	2503011	Bolt, Hex 3/8-16 x 1.00 G2	1
20	2502008	Washer, 3/8" Spring Lock	1
21	2505507	Reducer Bushing 1/2" to 1/4"	2
22	2504007	Cotter Pin 3/16" x 1 3/4"	4
23	101026	Safety Sign - Caution (Instructions)	1
24	101027	Safety Sign - Warning (Stand Clear)	2
25	101122	Safety Sign - Warning (Hi-Pressure)	2
26	101204	Safety Sign - Notice (Grapples)	2
27	101129	Safety Sign - Warning (Grapples)	1